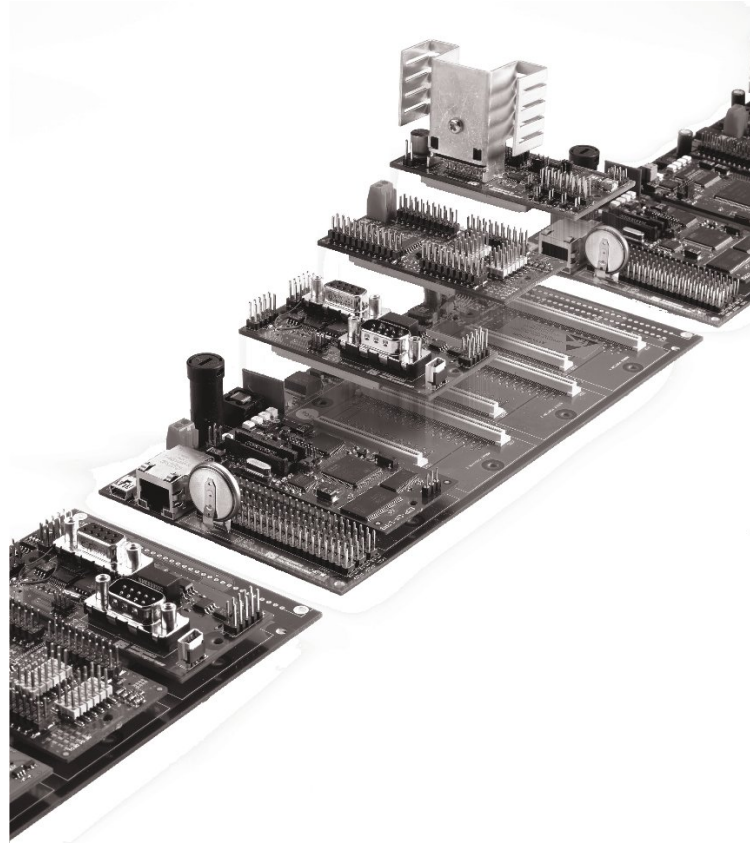
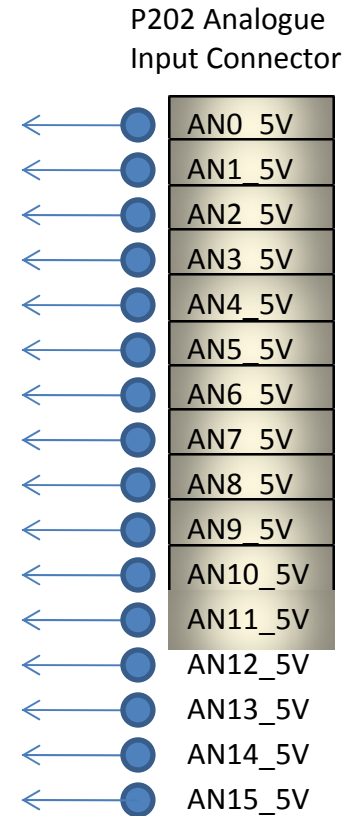
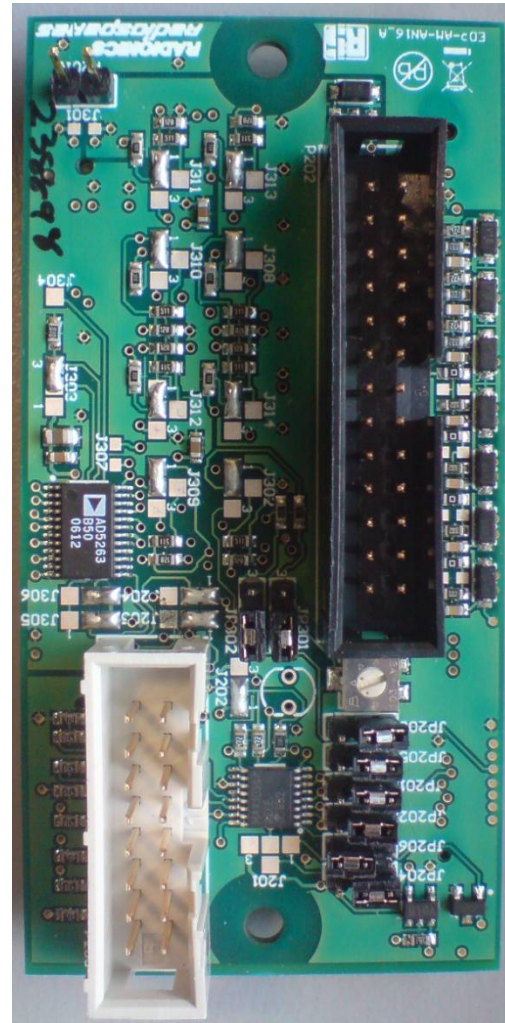
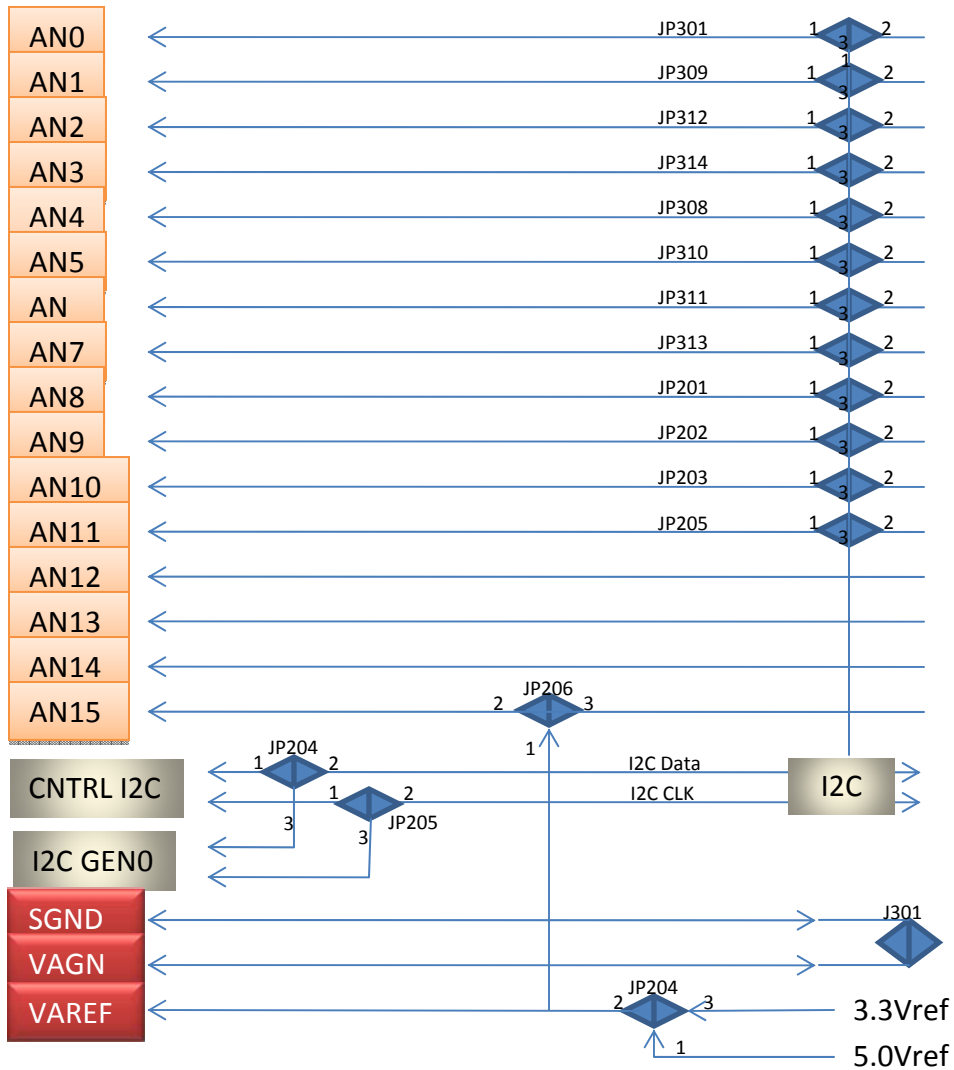


Mapping Aid For RS-EDP Platform



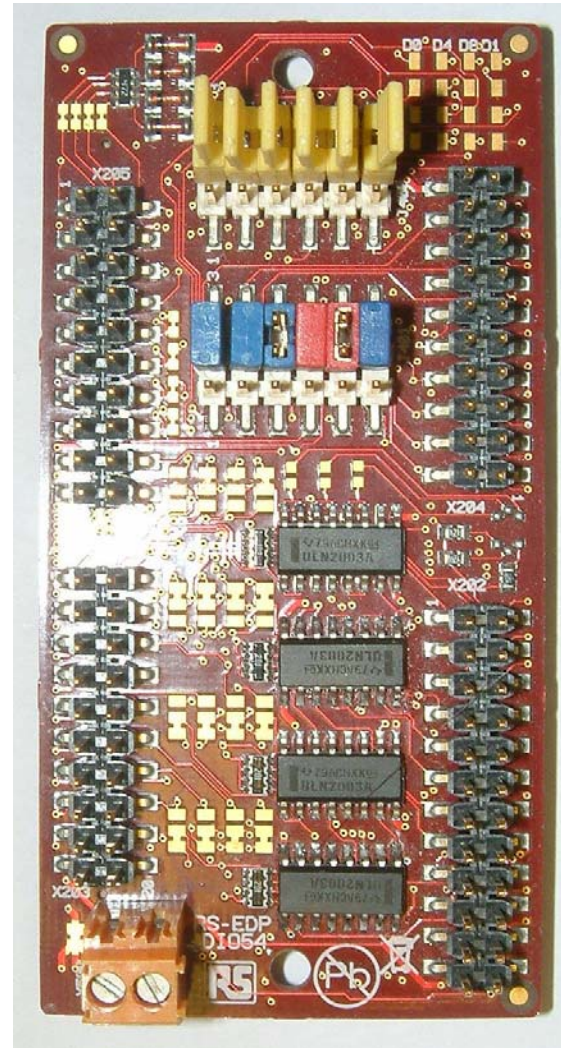
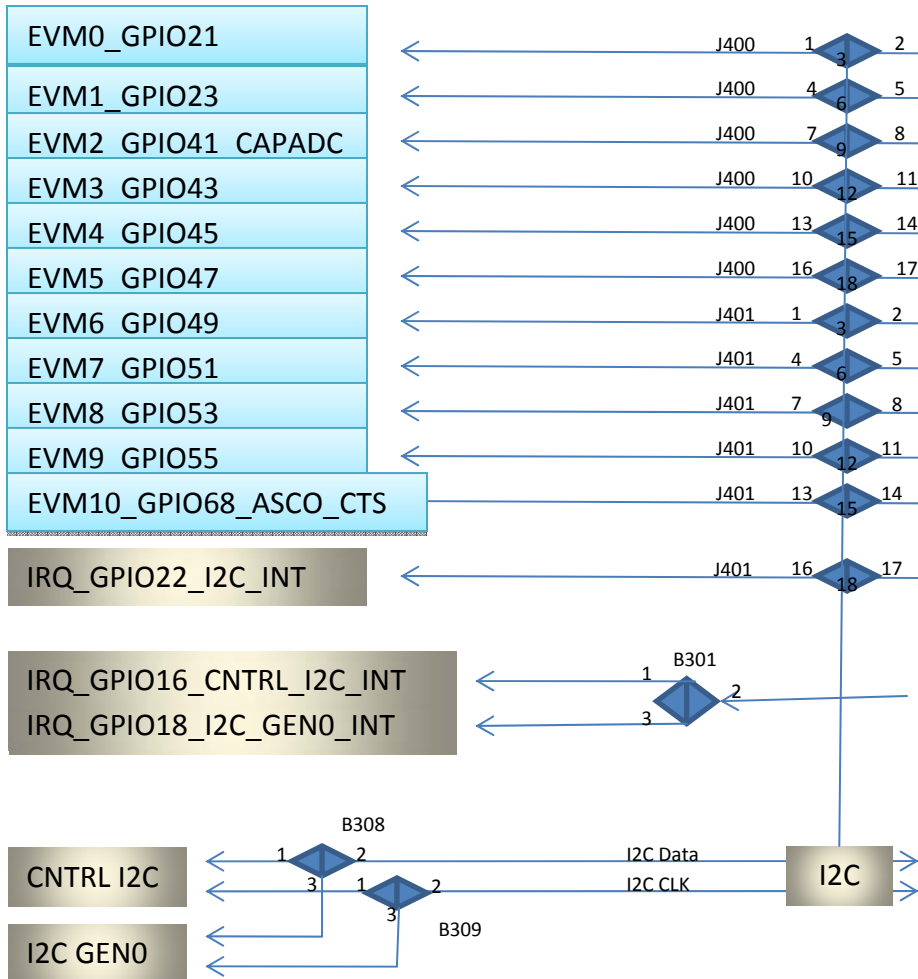
dsPIC33FJ256MC710 Mapping Aid Complete - Rev.1

AN16 - Analogue Module to RS-EDP Backplane

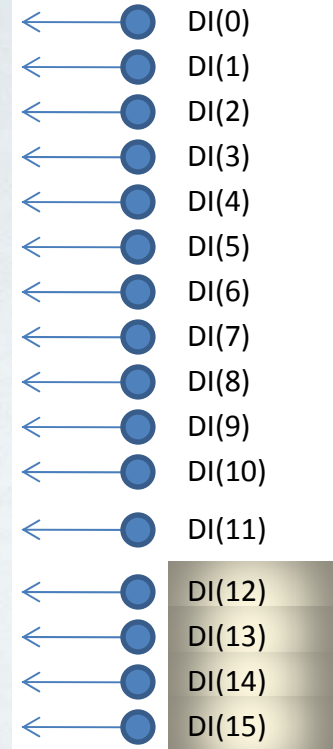


I2C bus can only read inputs AN0_5V to AN11_5V

DIO54 - Digital I/O Module Inputs to RS-EDP Backplane

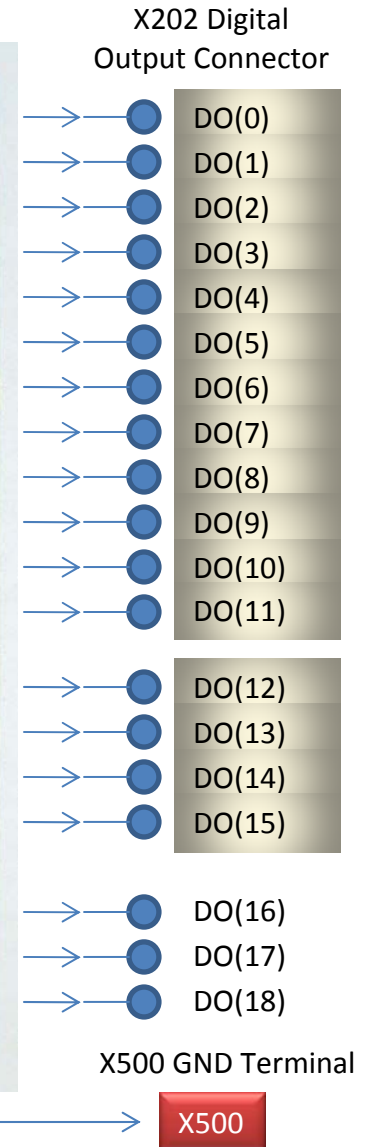
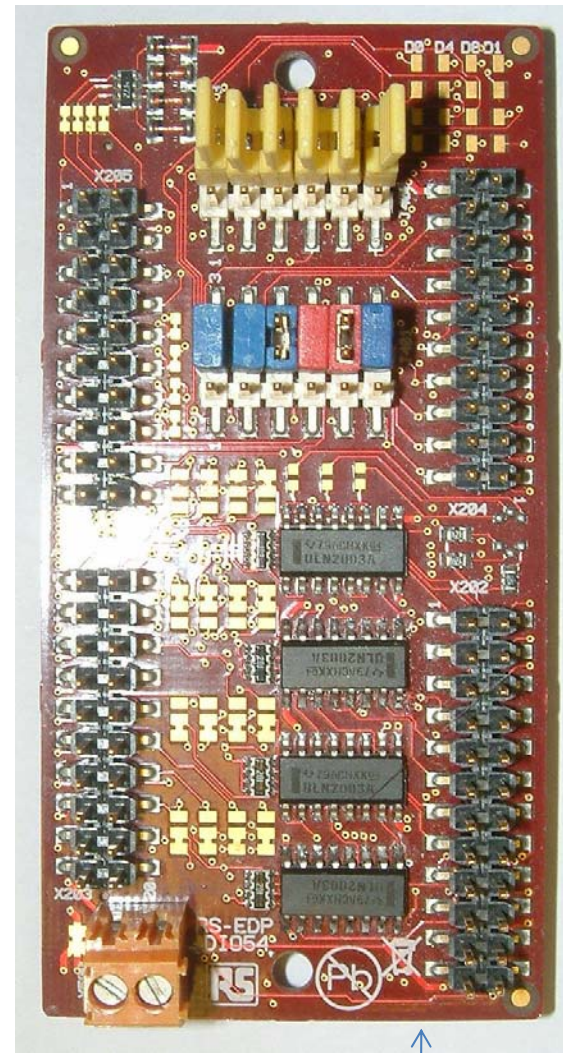
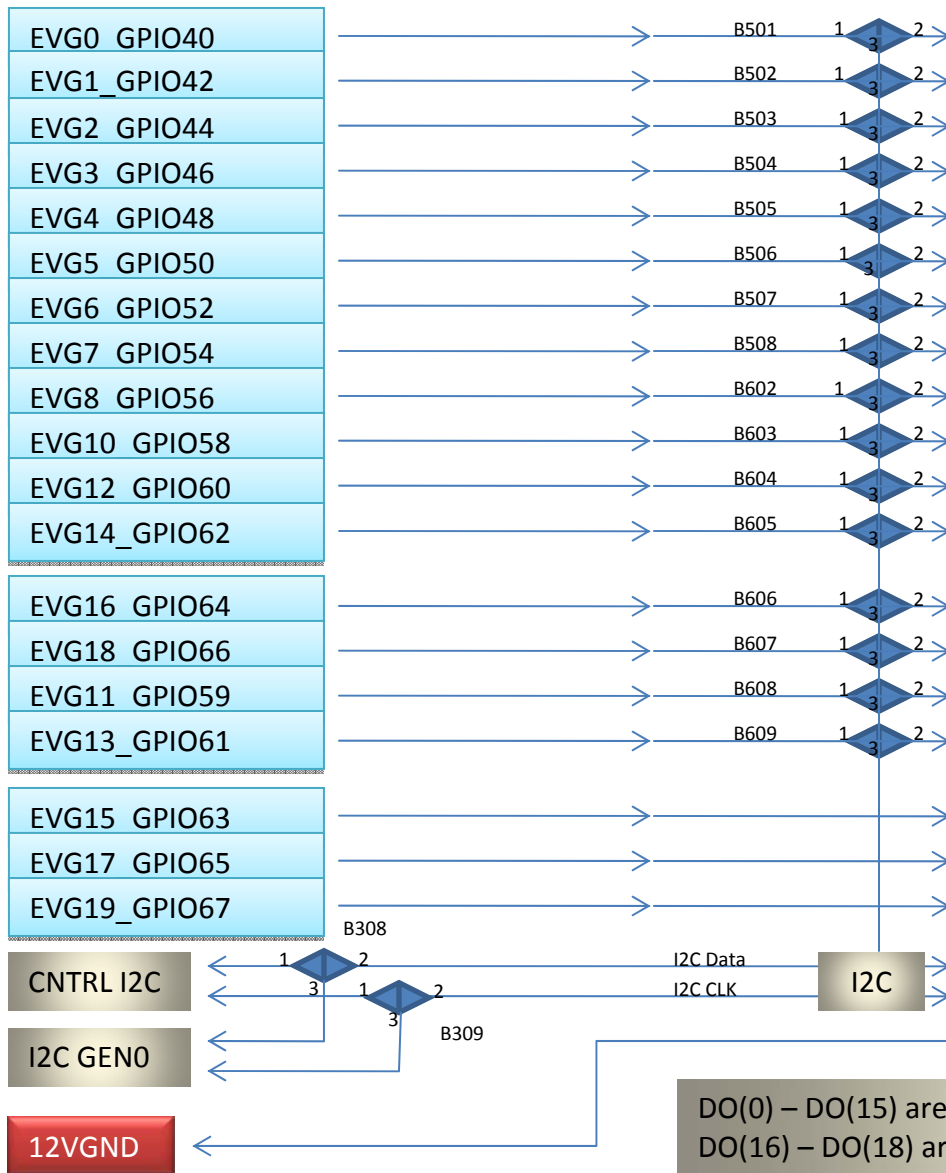


X205 Digital Input Connector



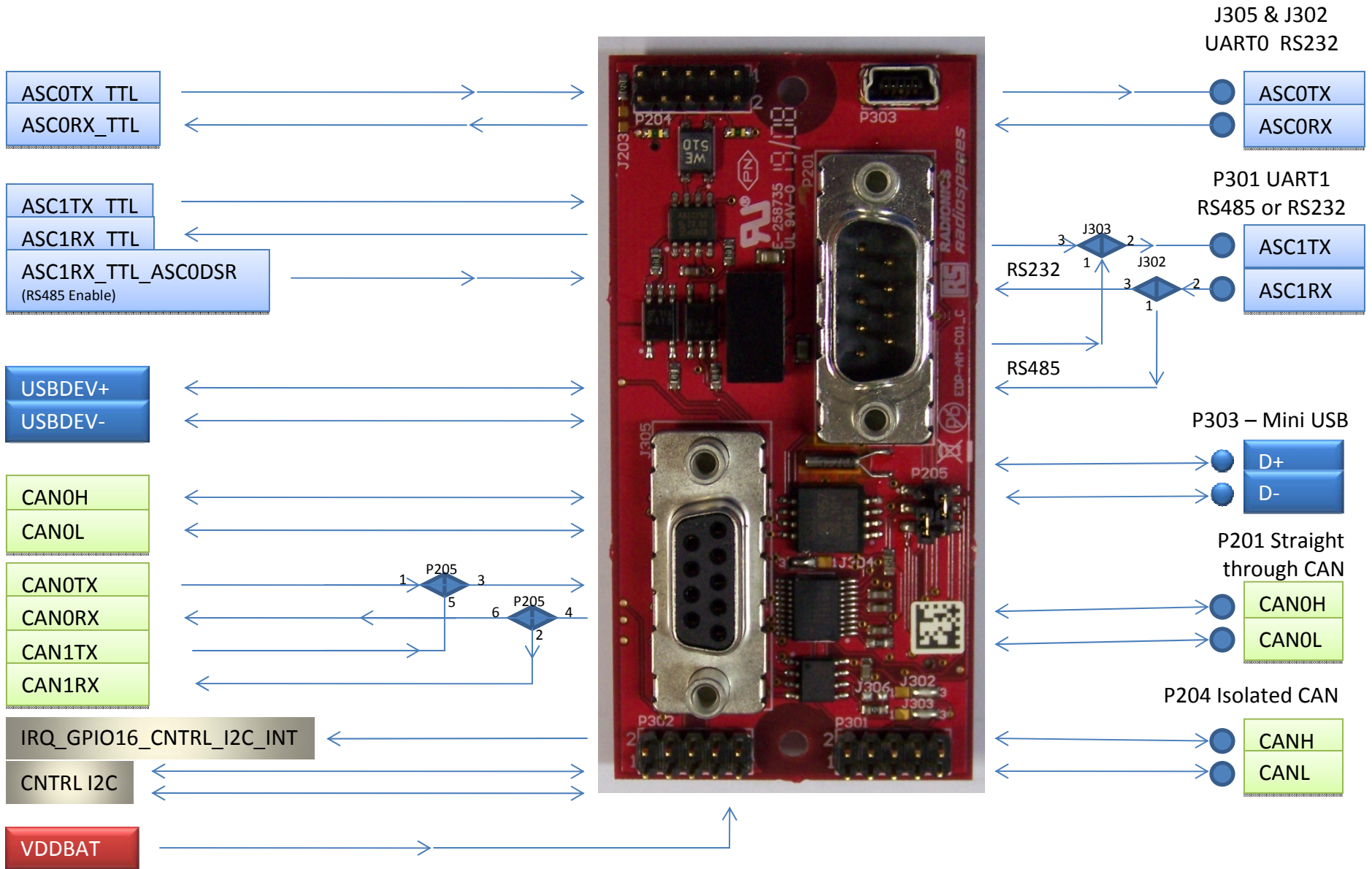
DI(0) – DI(11) can be read via I2C or via backplane by the MCU
 DI(12) – DI(15) can only be read via I2C.

DIO54 - Digital I/O Module Outputs to RS-EDP Backplane

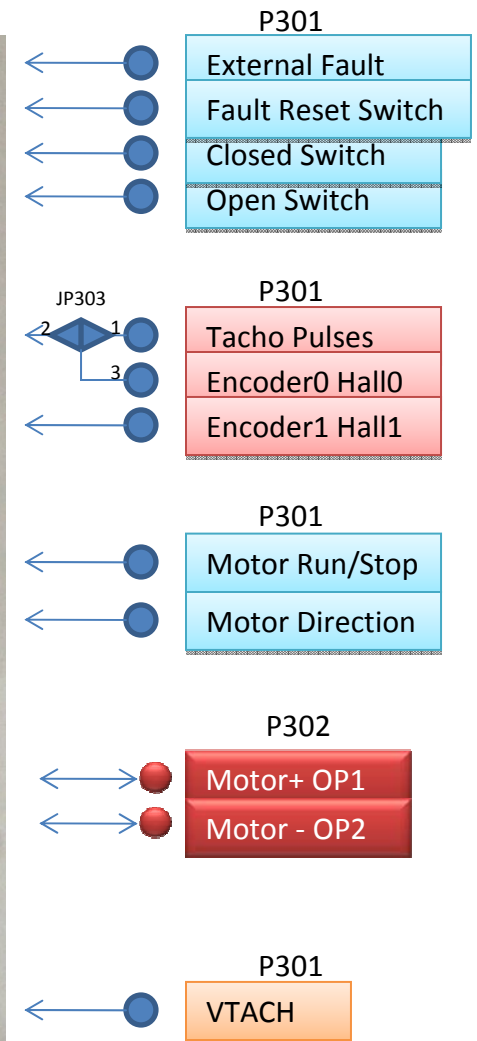
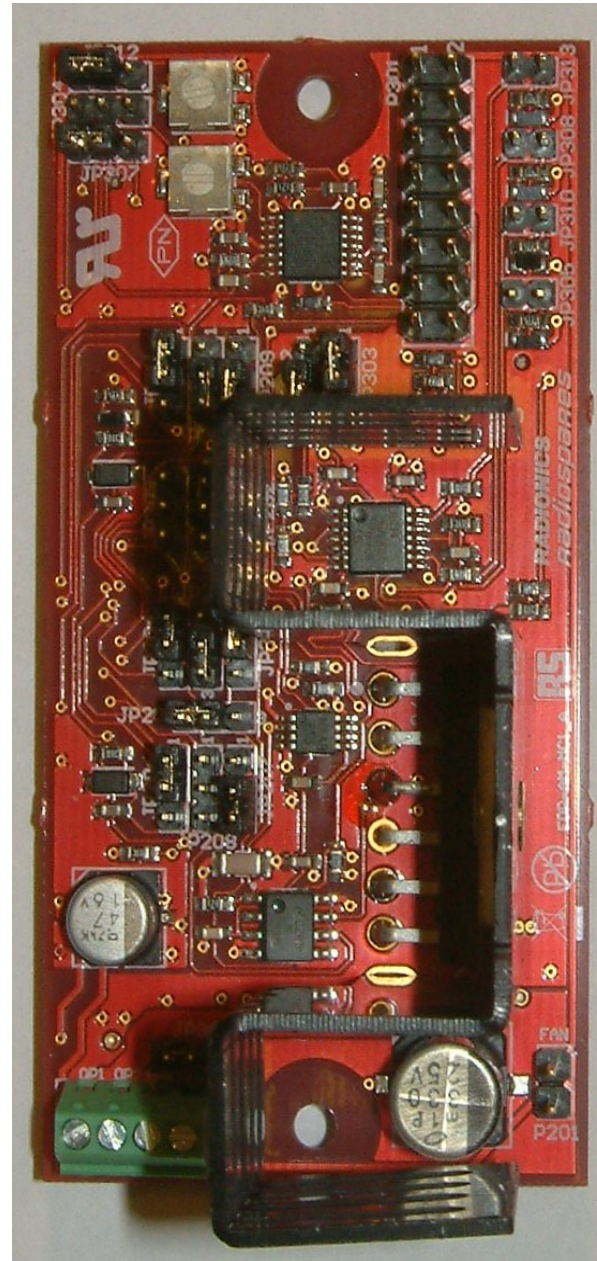
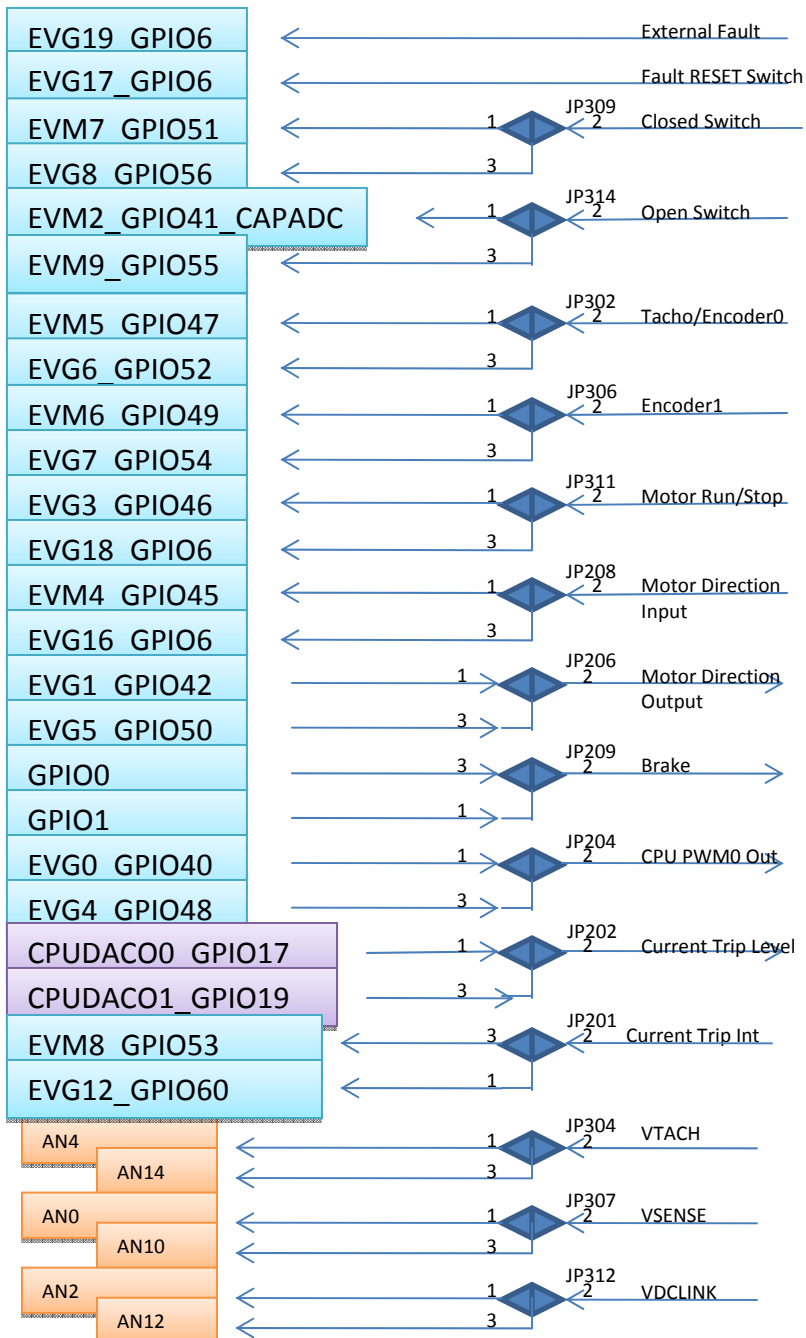


DO(0) – DO(15) are Darlington outputs, controlled by either I2C or direct MCU control
 DO(16) – DO(18) are MCU logic level outputs controlled only by direct MCU

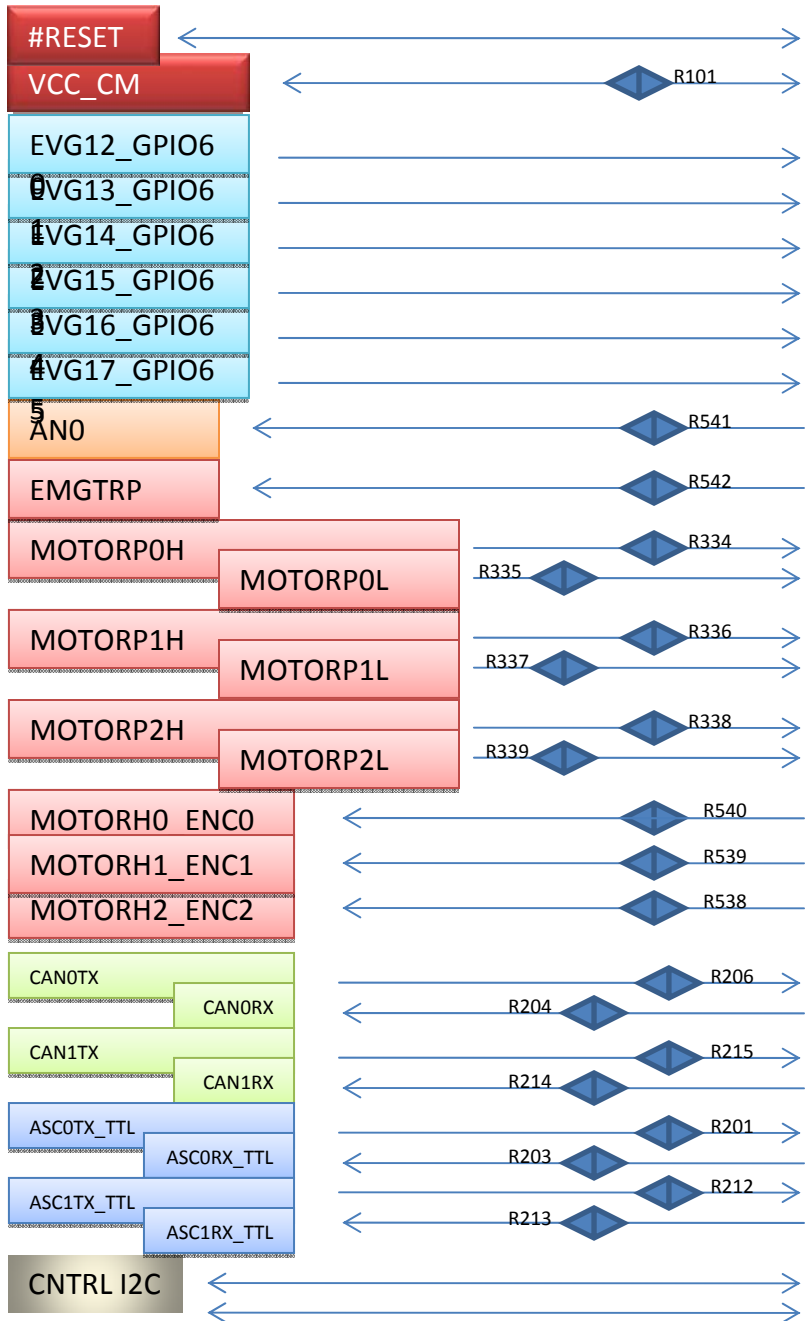
CO1 - Communications Module to RS-EDP Backplane



MC1 - Motor Drive Module to RS-EDP Backplane

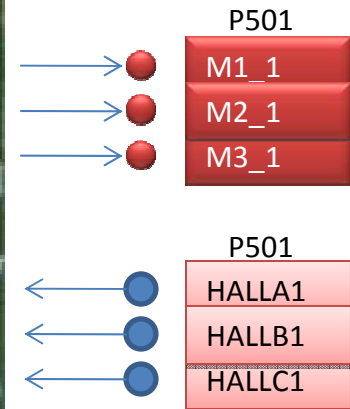


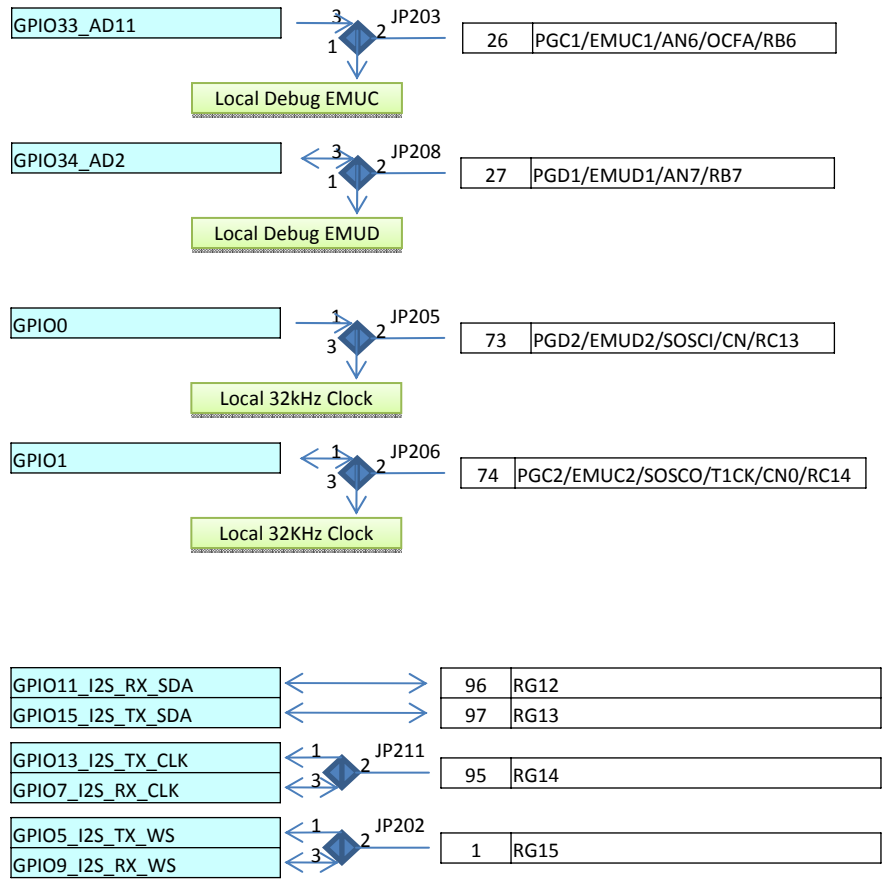
MC2 - Motor Drive Module to RS-EDP Backplane



MC2 Module is a twin motor drive module.

Output connections are only shown for the motor under control from an external Command Module, via the backplane.



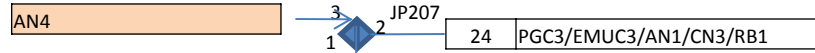
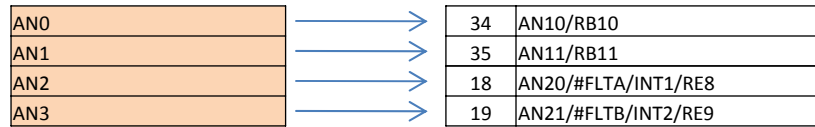


d
s
p
i
c
3
3
f
j
2
5
6
m
c
7
1
0

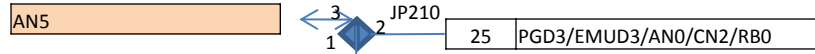
76	OC2/RD1	↔	EVG0_GPIO40
77	OC3/RD2	↔	EVG1_GPIO42
78	OC4/RD3	↔	EVG2_GPIO44
81	OC5/CN13/RD4	↔	EVG3_GPIO46
82	OC6/CN14/RD5	↔	EVG4_GPIO48
83	OC7/CN15/RD6	↔	EVG5_GPIO50
84	OC8/UPDN/CN16/RD7	↔	EVG6_GPIO52
60	TDI/RA4	↔	EVG7_GPIO54
61	TDO/RA5	↔	EVG8_GPIO56
48	IC8/#U1RTS/CN21/RD15	↔	EVG20_GPIO69_ASCO_RTS

79	IC5/RD12	↔	EVM2_GPIO41_CAPADC
80	IC6/CN19/RD13	↔	EVM3_GPIO43
91	AN22/CN22/RA6	↔	EVM4_GPIO45
92	AN23/CN23/RA7	↔	EVM5_GPIO47
67	INT4/RA15	↔	EVM6_GPIO49
68	IC1/RD8	↔	EVM7_GPIO51
70	IC3/RD10	↔	EVM8_GPIO53
71	IC4/RD11	↔	EVM9_GPIO55
47	IC7/#U1CTS/CN20/RD14	↔	EVM10_GPIO68_ASCO_CTS

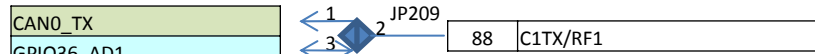
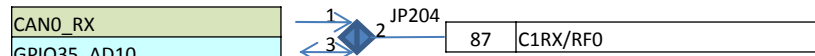
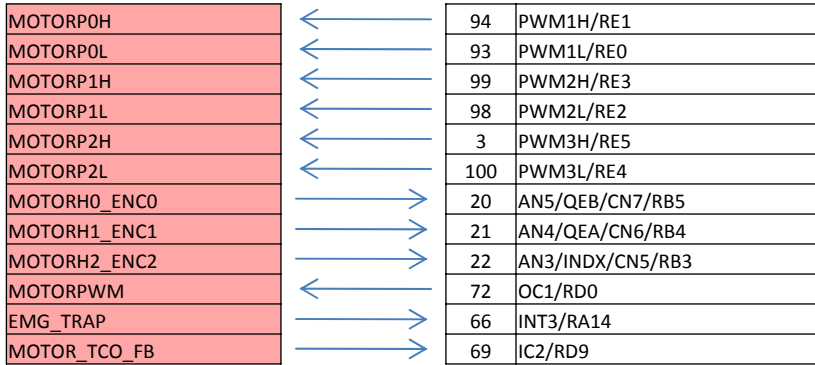
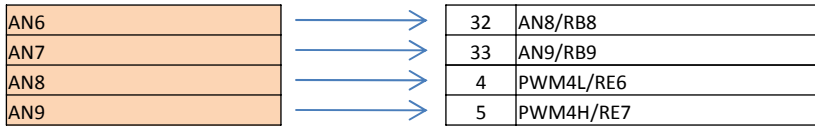
38	TCK/RA1	↔	GPIO24_AD7
39	#U2RTS/RF13	↔	GPIO25_AD15
40	#U2CTS/RF12	↔	GPIO26_AD6
41	AN12/RB12	↔	GPIO27_AD14
42	AN13/RB13	↔	GPIO28_AD5
43	AN14/RB14	↔	GPIO29_AD13
44	AN15/OCFB/CN12/RB15	↔	GPIO30_AD4



Local Debug EMUC



Local Debug EMUD



d
s
p
i
c
3
3
f
j
2
5
6
m
c
7
1
0

